

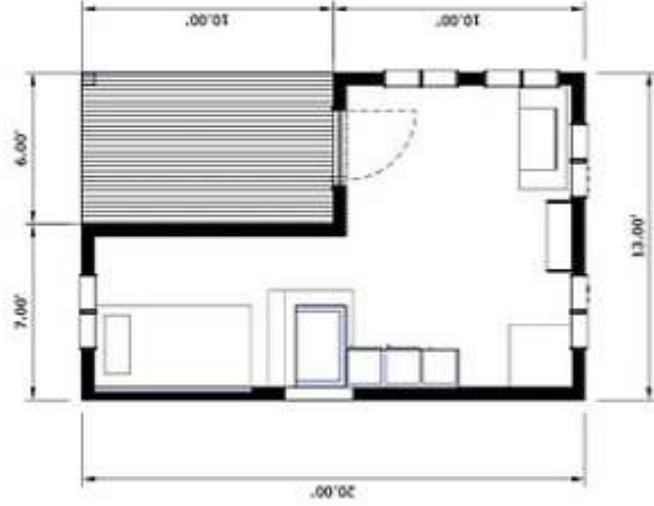
Sunny Spot



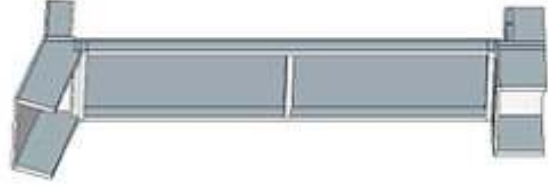
This house makes use of an L-shaped plan and inset porch to create a flexible living space that creates opportunities for varying degrees of private and public interactions. The house is simply furnished and designed to meet the most basic needs of comfortable living while maintaining a degree of flexibility in use. Occupant comfort is enhanced by use of a ceiling fan and the high, sloping ceiling which allow for cross ventilation in the warmer months.

The house was conceived as a simple, stick-framed structure that can be built by anyone with access to conventional tools and basic carpentry skills. The interior and exterior can be finished with a variety of materials from metal panels to Hardie board or wood, depending on what is currently available and affordable.

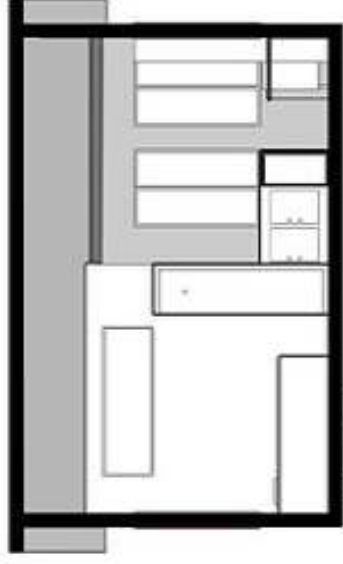
Despite its small size, the house gracefully combines several elements, such as a sunny nook, varying degrees of public/private space, and multifunctional storage and seating to create a peaceful place one could call home.



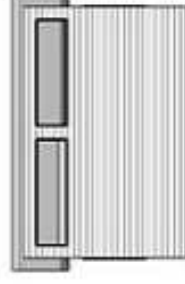
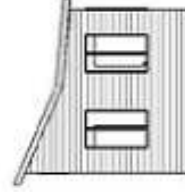
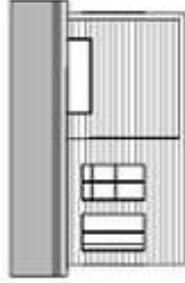
Floorplan
Scale 1/4"=1'-0"



Construction Detail
Scale 1/2"=1'-0"



Building Section
Scale 1/4"=1'-0"



Elevations
Scale 1/8"=1'-0"